



CATALAUGE

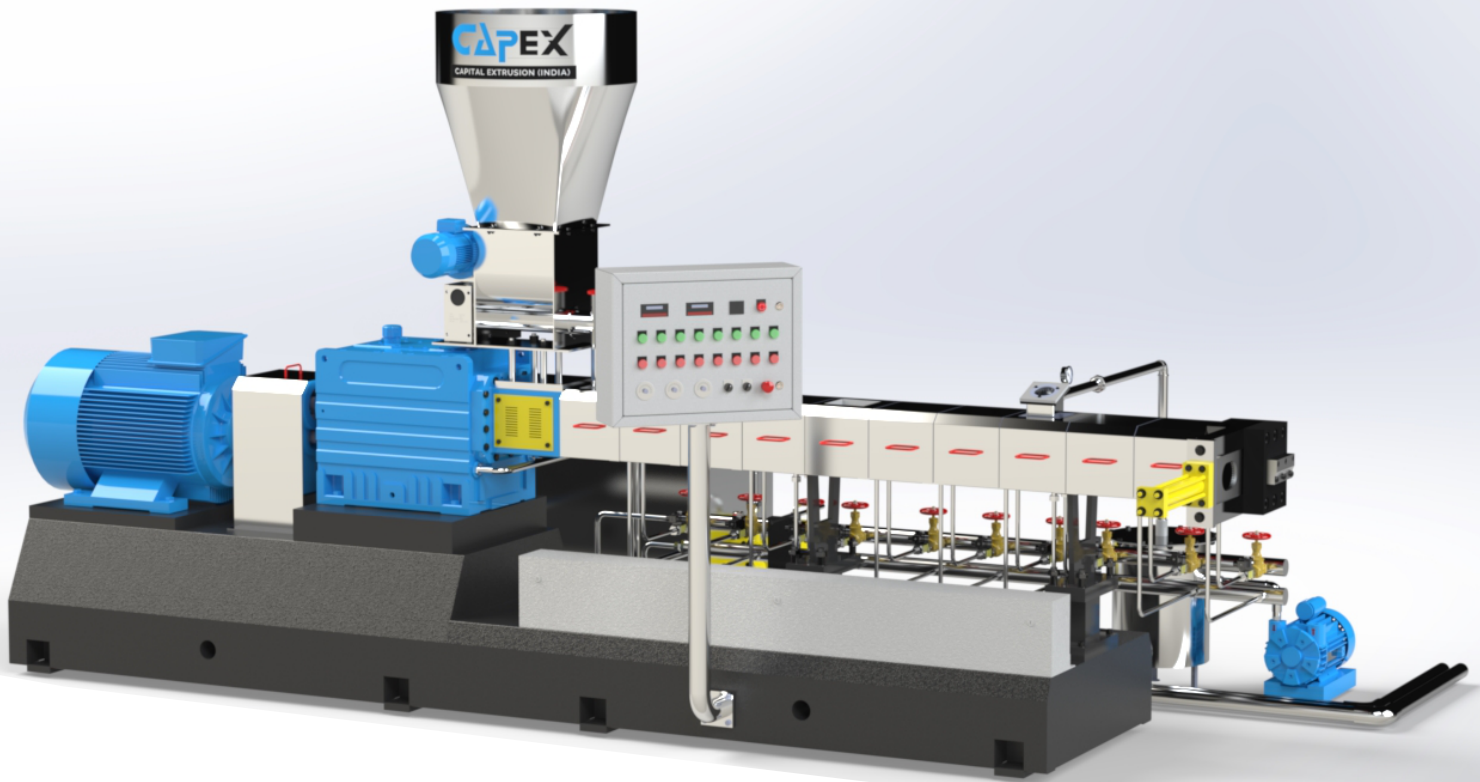
CAPEX

CAPITAL EXTRUSION (INDIA)

HOUSE OF PLASTIC PROCESSING MACHINES

Product Range

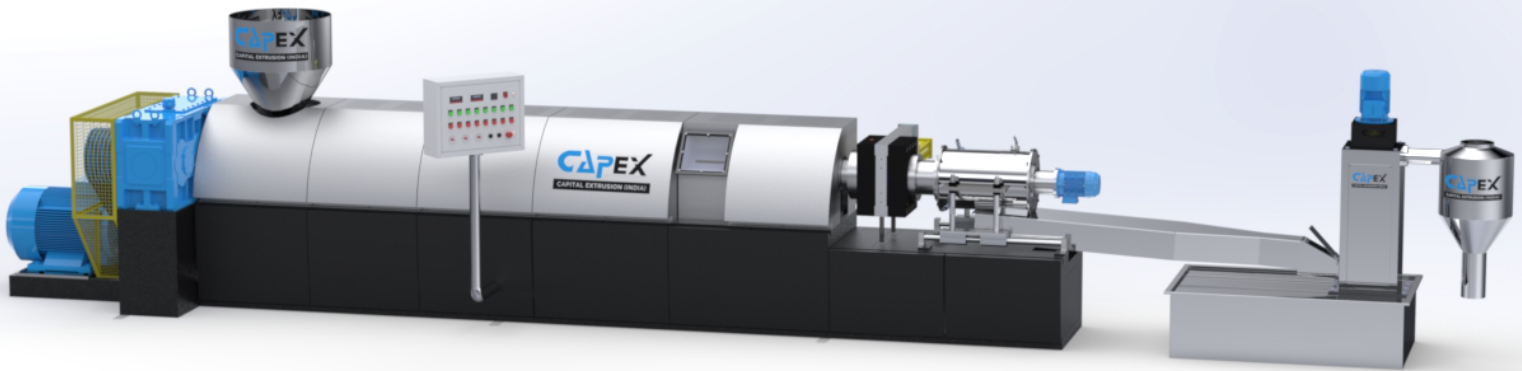
- CO-ROTATING TWIN SCREW LINE
- HIGH SPEED RECYCLING LINE
- TWO STAGE RECYCLING LINE
- VENTED EXTRUDER
- LAB EXTRUDERS
- HIGH SPEED MIXER
- SCRAP GRINDER
- HYDRAULIC SCREEN CHANGER
- HOPPER LOADER
- PELLETIZER MACHINE
- SEIVING MACHINE
- SCREW BARRELS
- AGGLOMERRATOR
- AUXILARY MACHINES



SME SERIES CO-ROTATING TWIN SCREW EXTRUDER MACHINE

| MODEL | SCREW DIA (MM) | L/d Ratio | N (r/min) | P (KW) | T (N.M) | PRODUCTION Kg/hr. | DIMENSION L/W (MM) |
|---------|----------------|-----------|-------------|-------------|---------|-------------------|--------------------|
| SME-36B | 35.6 | 28-60 | 500/600 | 18.5/22 | 141 | 20-100 | 3200/2000 |
| SME-52B | 51.4 | 28-60 | 400/500/600 | 45/55/75 | 420 | 120-280 | 4200/2600 |
| SME-65B | 62.4 | 28-60 | 400/500/600 | 90/110 | 825 | 200-500 | 4925/3140 |
| SME-75B | 71 | 28-60 | 400/500/600 | 110/132/160 | 1222 | 300-800 | 5815/3140 |
| SME-95B | 93 | 28-60 | 400/500/600 | 250/280/315 | 4202 | 750-1400 | 9500/3200 |

Production Capacity: 20-1400 Kg/hr.



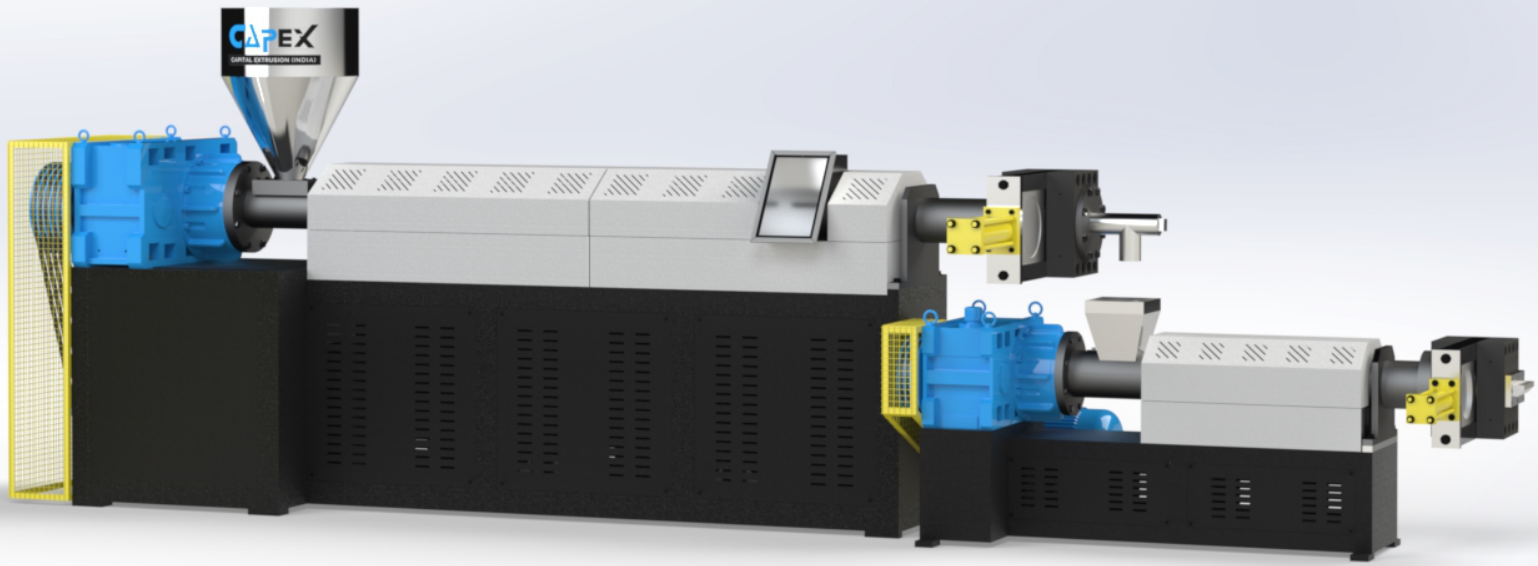
HSRE SERIES RECYCLING EXTRUDER

| MODEL | SCREW DIA (MM) | L/d Ratio | SCREW RPM | TOTAL LOAD (KW) MAIN MOTOR (KW) | PRODUCTION Kg/hr. | DIMENSION L/W (MM) |
|-------------|----------------|-----------|-----------|------------------------------------|----------------------|-----------------------|
| HSRE125 R29 | 125 | 29/1 | 65 | 155 / 75 | 280-300 | 8740/870 |
| HSRE140 R29 | 140 | 29/1 | 65 | 175 / 90 | 325-350 | 10350/1140 |
| HSRE150 R29 | 150 | 29/1 | 65 | 200 / 110 | 400-420 | 10585/1210 |
| HSRE160 R29 | 160 | 29/1 | 65 | 260 / 160 | 500-550 | 10900/1210 |

Production Capacity: 280Kg-550 Kg/hr.

Die Face Cutting attachment

For Polyethylene recycling

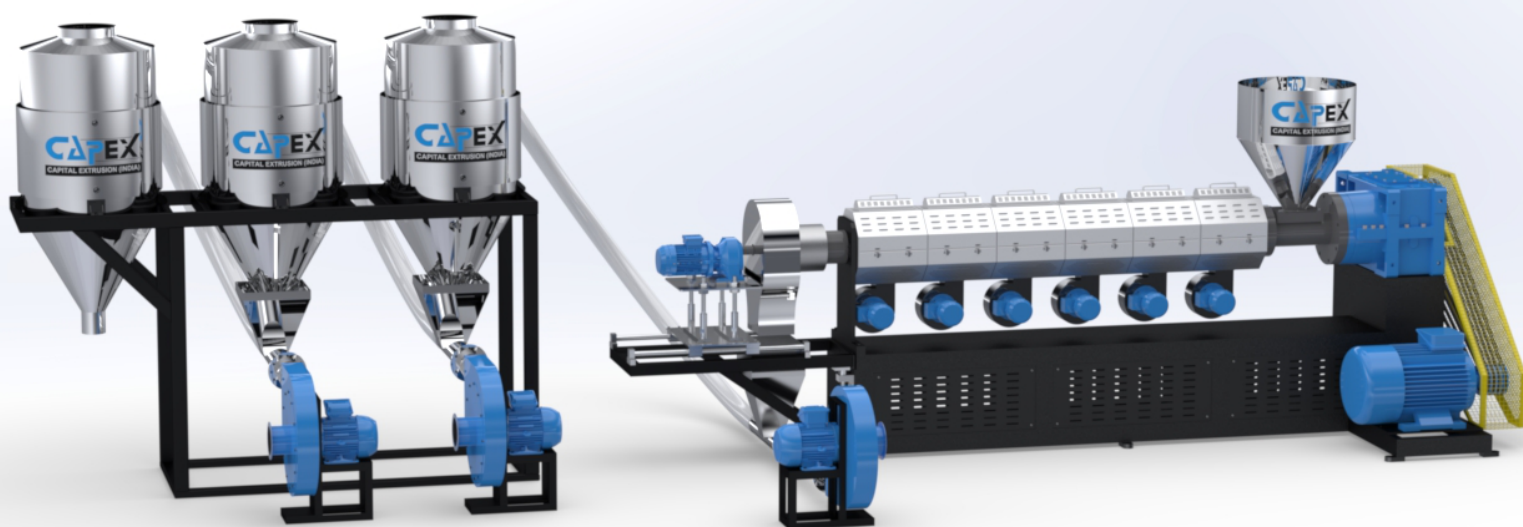


CTS SERIES TWO STAGE RECYCLING EXTRUDER

| MODEL | SCREW DIA (MM) MAIN / BABY | L/d Ratio MAIN / BABY | SCREW RPM MAIN / BABY | TOTAL LOAD (KW) MAIN MOTOR (KW) | PRODUCTION Kg/hr. | DIMENSION L/W (MM) |
|-------------|-------------------------------|--------------------------|--------------------------|------------------------------------|----------------------|-----------------------|
| CTS100 B125 | 100/125 | 29/1 12/1 | 60/75 | 120 30/18.5 | 125-150 | 5700/1750 |
| CTS110 B140 | 110/140 | 29/1 12/1 | 60/75 | 135 37/22 | 170-180 | 6200/1950 |
| CTS120 B140 | 120/140 | 29/1 12/1 | 60/75 | 145 45/22 | 200-220 | 6500/1950 |
| CTS125 B150 | 125/150 | 29/1 13/1 | 60/75 | 150 55/30 | 250-275 | 6950/2100 |
| CTS140 B160 | 140/160 | 29/1 13/1 | 55/75 | 200 75/37 | 300-325 | 7750/2250 |

Production Capacity: 125-325 Kg/hr.

For PE, PP, ABS, PS material

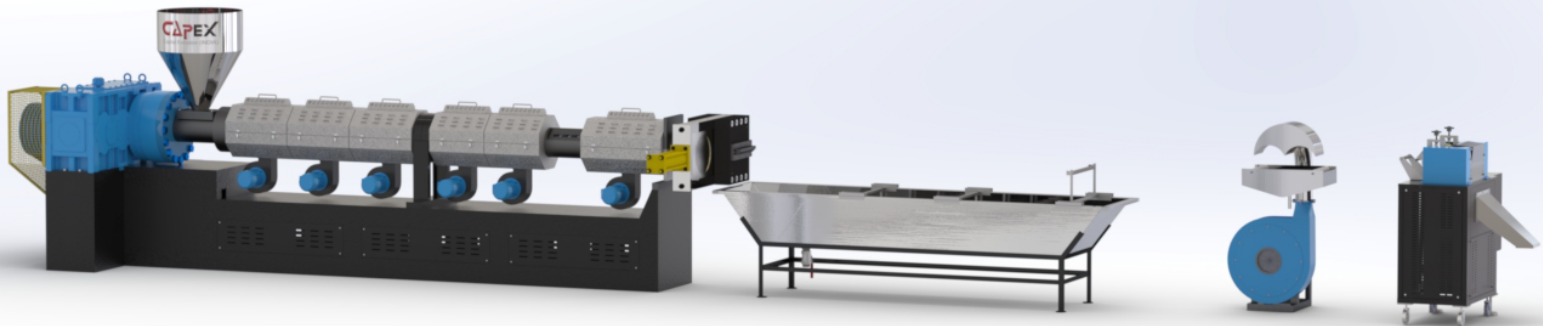


CXTR SERIES EXTRUDER MACHINE

| MODEL | SCREW DIA (MM) | L/d Ratio | SCREW RPM | TOTAL LOAD (KW) MAIN MOTOR (KW) | PRODUCTION Kg/hr. | DIMENSION L/W (MM) |
|-------------|----------------|-----------|-----------|------------------------------------|----------------------|-----------------------|
| CXTR90 R24 | 90 | 24/1 | 60 | 45 / 22 | 125-150 | 6085/3400 |
| CXTR90 R26 | 90 | 26/1 | 60 | 50 / 22 | 125-150 | 6270/3400 |
| CXTR100 L84 | 100 | 22/1 | 60 | 45 / 22 | 200-250 | 6060/3400 |
| CXTR100 R24 | 100 | 24/1 | 60 | 55 / 30 | 200-250 | 6325/3400 |
| CXTR100 R26 | 100 | 26/1 | 60 | 60 / 30 | 200-250 | 6525/3400 |
| CXTR115 R24 | 115 | 24/1 | 60 | 60 / 30 | 300-350 | 7425/3550 |
| CXTR115 R26 | 115 | 26/1 | 60 | 65 / 30 | 300-350 | 7650/3550 |
| CXTR120 R26 | 120 | 26/1 | 55 | 72 / 37 | 350-375 | 8525/3875 |
| CXTR125 R24 | 125 | 24/1 | 60 | 80 / 45 | 425-450 | 8200/3875 |
| CXTR125 R26 | 125 | 26/1 | 60 | 85 / 45 | 425-450 | 8650/3875 |

Production Capacity: 125-450 Kg/hr.

For PVC compounds.

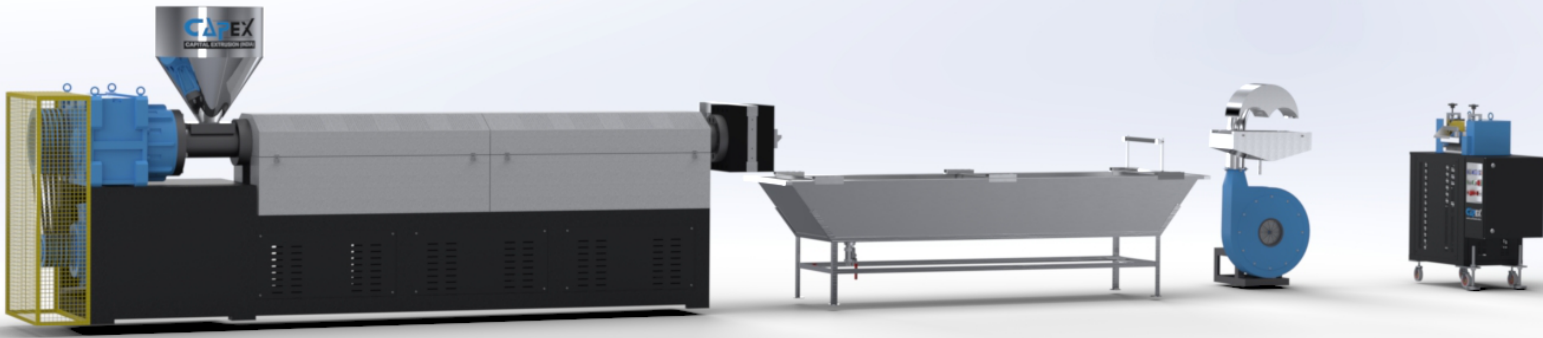


CVT SERIES VENTED RECYCLING MACHINE

| MODEL | SCREW DIA (MM) | L/d Ratio | SCREW RPM | TOTAL LOAD (KW) MAIN MOTOR (KW) | PRODUCTION Kg/hr. | DIMENSION L/W (MM) |
|---------------|----------------|---------------------|-----------|------------------------------------|----------------------|-----------------------|
| CVT90 R32 | 90 | 32/1 | 55 | 45 / 22 | 100-120 | 10100/1850 |
| CVT100 R29 | 90 | 29/1 | 55 | 70 / 30 | 125-150 | 10155/1900 |
| CVT100 R32 | 100 | 32/1 | 55 | 75 / 30 | 125-150 | 10455/1900 |
| CVT100 R36 | 100 | 36/1 | 55 | 80 / 30 | 125-150 | 10855/1900 |
| CVT100 R36 DV | 100 | 36/1 Double Vent | 60 | 80 / 30 | 140-160 | 10855/1900 |
| CVT115 R32 | 115 | 32/1 | 55 | 90 / 37 | 175-190 | 10985/2000 |
| CVT115 R36 | 115 | 36/1 | 55 | 95 / 37 | 175-190 | 11450/2000 |
| CVT115 R36 DV | 115 | 36/1 Double Vent | 60 | 105 / 45 | 190-220 | 11450/2000 |
| CVT120 R29 | 120 | 29/1 | 55 | 105 / 55 | 200-225 | 10785/2000 |
| CVT125 R29 | 125 | 29/1 | 55 | 130 / 75 | 250-275 | 10980/2200 |
| CVT125 R32 | 125 | 32/1 | 55 | 135 / 75 | 250-275 | 11955/2200 |
| CVT140 R29 | 140 | 29/1 | 55 | 160 / 90 | 325-350 | 12245/2350 |

Production Capacity: 100-350 Kg/hr.

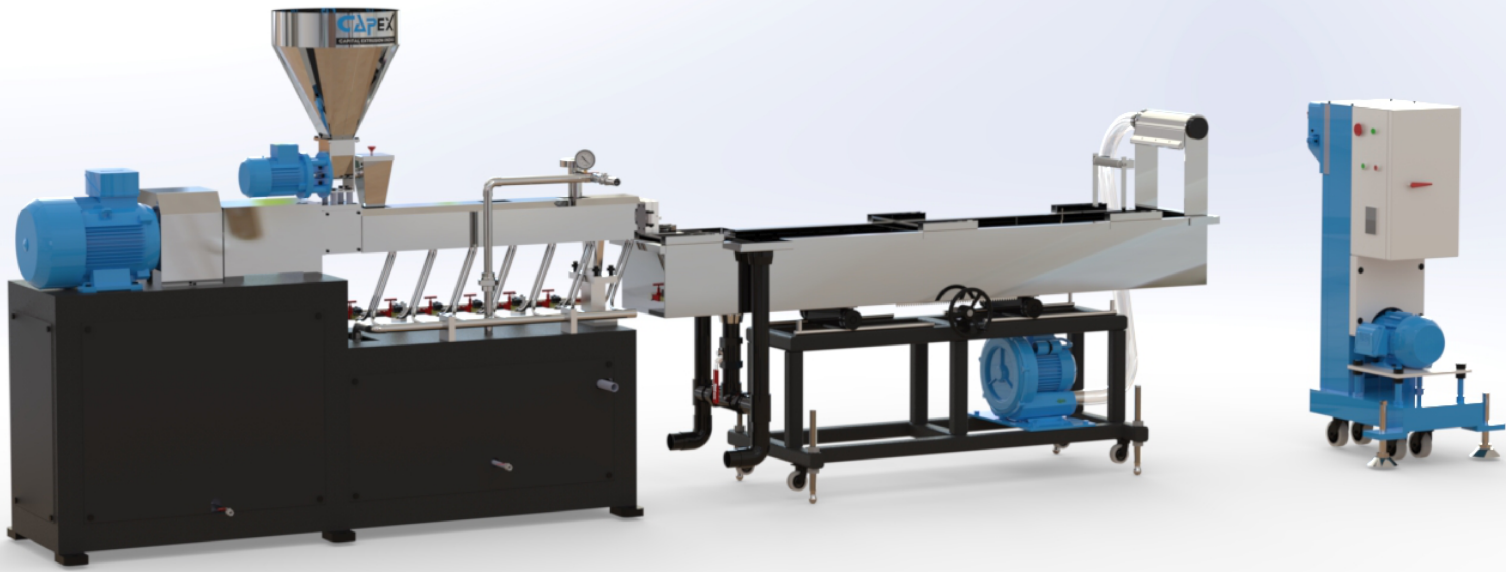
For PE/PP/ABS/PS/PC Scrap Material.



CVT SERIES SINGLE SCREW EXTRUDER MACHINE

| MODEL | SCREW DIA (MM) | L/d Ratio | SCREW RPM | TOTAL LOAD (KW) MAIN MOTOR (KW) | PRODUCTION Kg/hr. | DIMENSION L/W (MM) |
|-------|----------------|-----------|-----------|------------------------------------|----------------------|-----------------------|
| CVT | | | | | | |
| CVT | | | | | | |
| CVT | | | | | | |
| CVT | | | | | | |
| CVT | | | | | | |
| CVT | | | | | | |
| CVT | | | | | | |
| CVT | | | | | | |
| CVT | | | | | | |
| CVT | | | | | | |
| CVT | | | | | | |
| CVT | | | | | | |
| CVT | | | | | | |

Production Capacity: Kg/hr.
 For PE/PP/ABS/PS/PC Scrap Material.



SLB LAB EXTRUDER

| MODEL | SCREW DIA (MM) | L/d Ratio | N (r/min) | P (KW) | T (N.M) | PRODUCTION Kg/hr. | DIMENSION L/W (MM) |
|-------|----------------|-----------|-----------|--------|---------|-------------------|--------------------|
| SLB20 | 20 | 40 | 600 | 5.5 | 36 | 5-10 | 4800/850 |

Production Capacity: 5-10 Kg/hr.

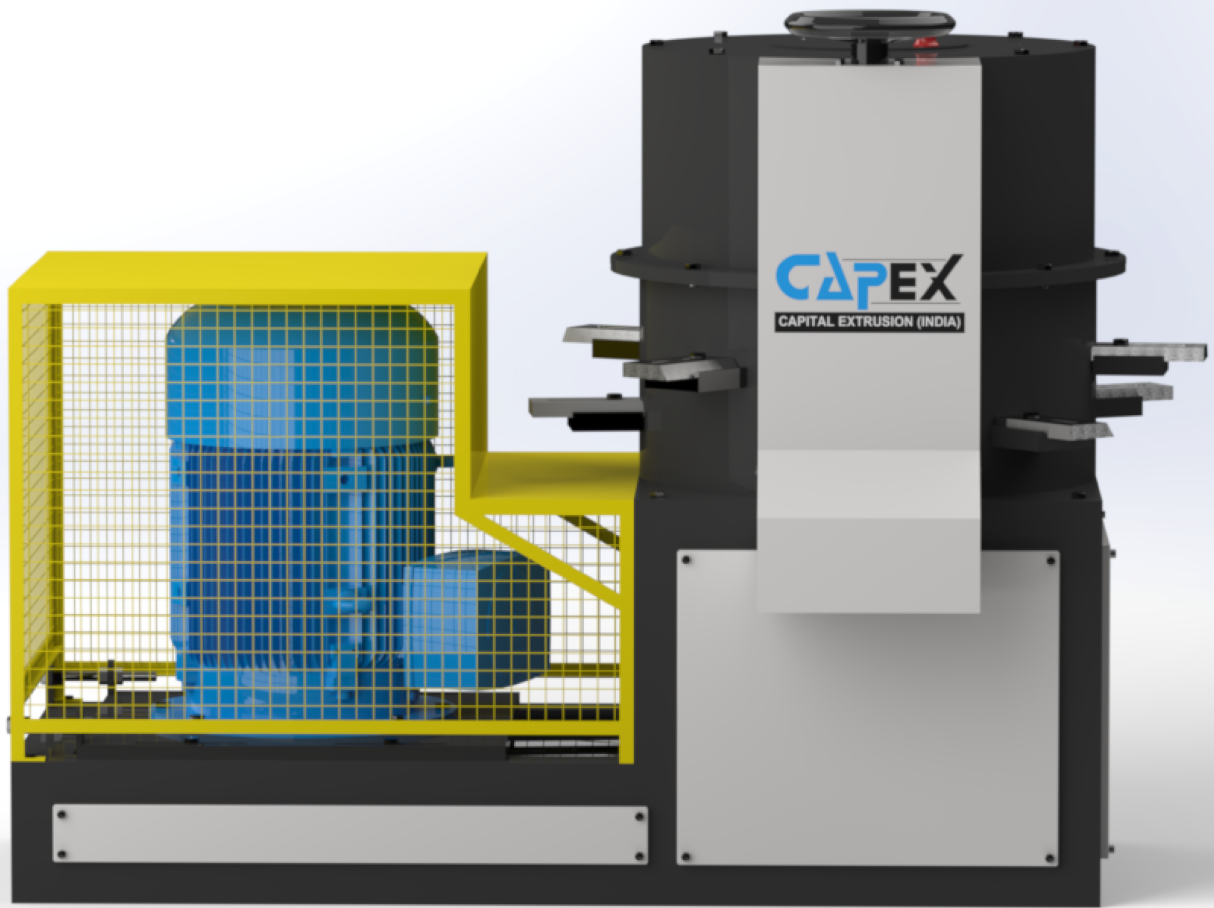


CMXR SERIES MIXTURE MACHINE

| MODEL | SCREW DIA (MM) | CAPACITY (Kgs) | POWER (KW) | DIMENSION (L/W) |
|----------|----------------|----------------|------------|-----------------|
| CMXR-50 | 600 | 50 | 22 | 2200/675 |
| CMXR-100 | 650 | 100 | 30 | 2300/725 |
| CMXR-125 | 725 | 125 | 55 | 2450/800 |
| CMXR-150 | 840 | 150 | 75 | 2645/915 |

Production Capacity: 50-150 Kg/hr.

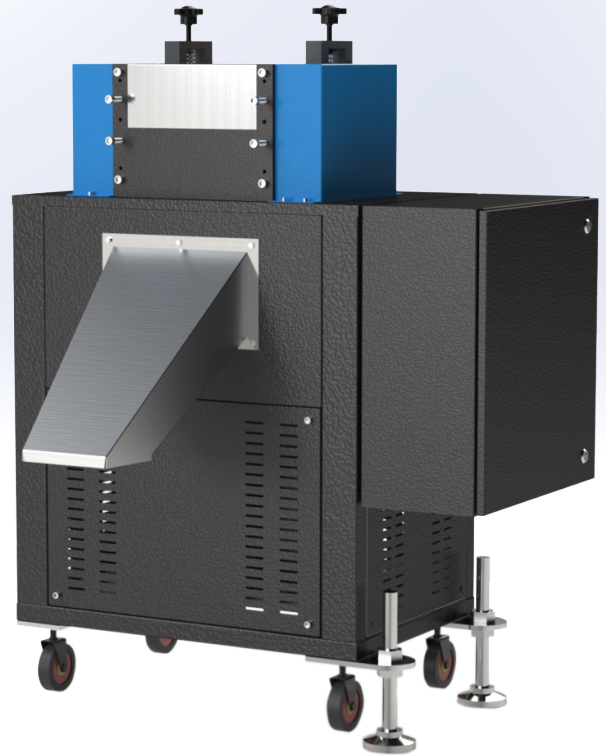
For



CAGM SERIES AGGLOMERATOR MACHINE

| MODEL | SCREW DIA (MM) | No of Blades INNER/OUTER | POWER (KW) | CAPACITY | DIMENSION (L/W) |
|---------|----------------|--------------------------|------------|----------|-----------------|
| CAGM-20 | 510 | 2/3 | 22 | 75-90 | 1800/850 |
| CAGM-25 | 635 | 4/6 | 37 | 125-150 | 1850/920 |
| CAGM-32 | 810 | 4/8 | 55 | 200-220 | 1920/1130 |
| CAGM-36 | 915 | 6/10 | 75 | 275-300 | 2016/1230 |

Production Capacity: 75-300 Kg/hr
For PE/PP



SIQ SERIES PELLETIZER

| MODEL | CAPACITY | ROTOR | POWER | DIMENSION L/W (MM) |
|--------|------------|-------|--------|-----------------------|
| SIQ150 | 150 Kg/hr. | 140mm | 2.2 KW | 900/850 |
| SIQ200 | 250 Kg/hr. | 200mm | 3.7 KW | 965/800 |
| SIQ250 | 350 Kg/hr. | 250mm | 5.5 KW | 1050/1000 |

Production Capacity: 150-350 Kg/hr.
 Heavy Duty Construction
 Fully packed Designed
 AC Driver Operated



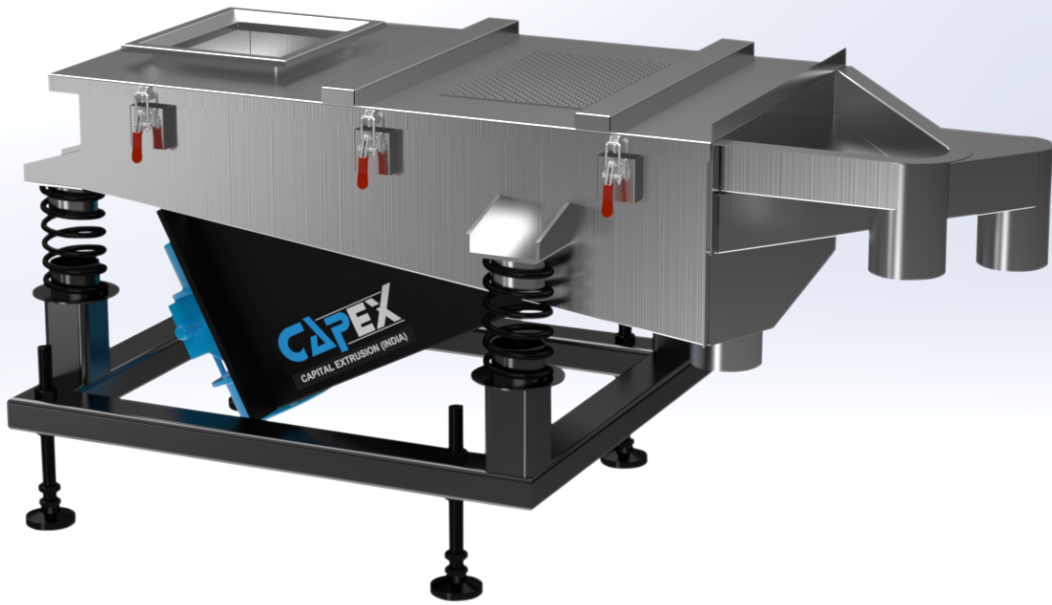
LQ SERIES PELLETIZER

| MODEL | CAPACITY | ROTOR | POWER | DIMENSION L/W (MM) |
|--------|-------------|-------|---------|-----------------------|
| LQ50 | 50 Kg/hr. | 50mm | 2.2 KW | 1000/1000 |
| LQ100 | 100 Kg/hr. | 100mm | 3.7 KW | 1200/1100 |
| LQ300 | 300 Kg/hr. | 150mm | 5.5 KW | 1250/1170 |
| LQ500 | 500 Kg/hr. | 200mm | 7.5 KW | 1300/1170 |
| LQ1000 | 1000 Kg/hr. | 250mm | 12.5 KW | 1350/1200 |

Production Capacity: 50-1000 Kg/hr.

Heavy Duty Construction

Pneumatic Pressure Roller



CSEM SERIES SEIVING MACHINE

| MODEL | CAPACITY | POWER | DIMENSION L/W (MM) |
|---------|------------|--------|-----------------------|
| CSEM150 | 150 Kg/hr. | 0.5 KW | 1200/700 |
| CSEM300 | 300 Kg/hr. | 0.5 KW | 1450/750 |
| CSEM500 | 500 Kg/hr. | 1.2 KW | 1700/830 |

Production Capacity: 150-500 Kg/hr.
3 stage Filtration

ADDRESS

UNIT-1

PLOT NO. 113.

HSI IDC Industrial Estate.

Phase-1.. Kundli. SONEPAT.

HARYANA-131028

Phone Number

+91 9210999911

+91 9210999922

Email Address

machines@capex.in

Let's Talk